

Machine Learning Approaches for Climate-Resilient Smart Agriculture Using Remote Sensing and IoT Technologies

Neha Agarwal^{1*}, MD Arif^{2*}, Rakesh Chandra^{3*}

¹Department of Computer Science, Guru Ghasidas Vishwavidyalaya, Bilaspur, India

²Department of Agricultural Engineering, Aligarh Muslim University, Aligarh, India

³Department of Information Technology, Tezpur University, Assam, India

*Authors Email: a.neha@ggv.ac.in, mdarif@amu.ac.in, rakesh.c@tpu.edu.in

Received:
Feb 22, 2026
Accepted:
Feb 23, 2026
Published online:
Feb 24, 2026

Abstract: Agricultural production systems are increasingly vulnerable to climate variability, extreme weather events, and changing environmental conditions. These challenges necessitate the development of intelligent agricultural technologies capable of supporting adaptive decision-making and resource-efficient farming practices. Smart agriculture integrates Internet of Things (IoT) technologies, remote sensing data, and machine learning algorithms to monitor environmental conditions and optimize agricultural operations. This study proposes a machine learning-driven framework for climate-resilient smart agriculture that combines satellite-based remote sensing, ground-level IoT sensor networks, and predictive analytics. The framework continuously collects environmental parameters including soil moisture, temperature, humidity, rainfall, and vegetation indices derived from satellite imagery. Machine learning models are then used to predict crop health conditions, irrigation requirements, and potential climate-related risks. The research introduces a data processing architecture consisting of a sensing layer, data integration module, machine learning prediction engine, and agricultural decision support system. Several machine learning algorithms including Random Forest, Support Vector Machine, and Artificial Neural Networks are evaluated for their performance in crop yield prediction and climate stress detection. Experimental analysis using simulated agricultural datasets demonstrates that machine learning-based predictive models can significantly improve the accuracy of crop monitoring and irrigation scheduling. Results indicate that the proposed framework enhances crop yield prediction accuracy while reducing water consumption through intelligent irrigation recommendations. The findings highlight the potential of integrating remote sensing technologies and machine learning algorithms to support climate-resilient agricultural systems capable of adapting to environmental uncertainty and supporting sustainable food production.

Keywords: Smart Agriculture, Machine Learning, Remote Sensing, Internet of Things, Climate Resilience

1. Introduction

Agriculture remains one of the most critical sectors for global food security and economic development. However, agricultural production is increasingly affected by climate change, environmental degradation, and resource scarcity. Rising temperatures, unpredictable rainfall patterns, and extreme weather events have introduced new uncertainties in crop production systems. Traditional farming practices often rely on manual observation and historical experience for decision-making. While these methods have supported agriculture for centuries, they are often insufficient in addressing modern climate-related challenges. Farmers require access to real-time environmental data and predictive insights that can guide crop management decisions. Smart agriculture technologies have emerged as promising solutions for improving agricultural productivity and resilience. These technologies integrate advanced sensing systems, wireless communication networks, and data analytics platforms to monitor agricultural environments and support automated decision-making. Remote sensing technologies provide large-scale observations of agricultural landscapes through satellite imagery and aerial sensing platforms. These systems can monitor vegetation health, soil conditions, and environmental parameters over extensive geographic areas. In addition to remote sensing, IoT sensor networks enable continuous monitoring of local field conditions such as soil moisture, temperature, and humidity. Combining these data sources with machine learning algorithms allows for predictive modeling of crop growth, irrigation

requirements, and climate stress events. The objective of this study is to develop a machine learning-based framework that integrates IoT sensors and remote sensing data to support climate-resilient agricultural practices.

2. Literature Review

Recent advancements in precision agriculture have emphasized the importance of data-driven decision support systems. Precision agriculture uses sensors, satellite imagery, and geographic information systems to optimize agricultural inputs such as water, fertilizers, and pesticides. Remote sensing technologies have been widely used for crop monitoring and yield estimation. Vegetation indices derived from satellite imagery, such as the Normalized Difference Vegetation Index (NDVI), provide valuable insights into plant health and photosynthetic activity. Machine learning techniques have also been applied to agricultural datasets for crop classification, yield prediction, and disease detection. Algorithms such as Random Forest and Support Vector Machines have demonstrated strong performance in analyzing complex environmental data patterns. IoT sensor networks have further expanded the capabilities of precision agriculture by providing real-time measurements of field conditions. Sensors embedded in soil and irrigation systems can monitor environmental variables continuously. Despite these technological advancements, integrating heterogeneous data sources from remote sensing platforms and IoT networks remains a significant challenge. Effective data fusion techniques are required to combine large-scale satellite observations with localized sensor measurements. This research addresses these challenges by proposing a unified machine learning framework capable of integrating remote sensing data and IoT sensor observations for intelligent agricultural decision-making.

3. System Architecture for Smart Agriculture

The proposed smart agriculture framework consists of multiple interconnected components that operate together to support data collection, processing, and decision making. The sensing layer includes IoT devices installed within agricultural fields. These sensors measure environmental variables such as soil moisture, temperature, humidity, and rainfall intensity. The sensors transmit collected data through wireless communication networks. Remote sensing platforms provide satellite imagery that captures large-scale agricultural conditions. Vegetation indices derived from satellite data provide information about crop health and growth patterns. The data integration layer combines information from IoT sensors and remote sensing sources into a unified agricultural dataset. Data preprocessing techniques such as normalization and noise filtering are applied to improve data quality. The machine learning layer processes integrated datasets using predictive models capable of identifying patterns related to crop growth and climate stress. The final component of the system is a decision support platform that provides recommendations regarding irrigation scheduling, crop health management, and resource allocation.

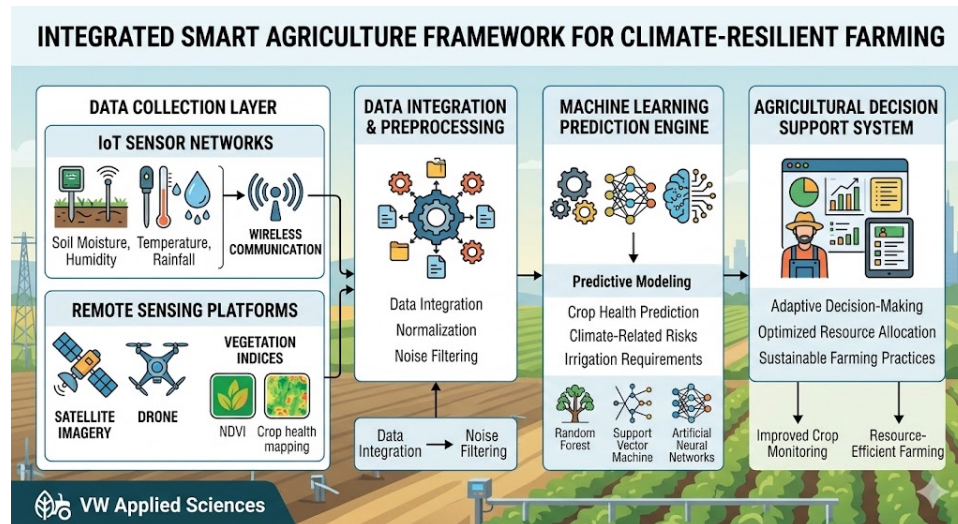


Fig. 1 Smart Agricultural Framework

4. Machine Learning Models for Agricultural Prediction

Machine learning algorithms play a central role in analyzing environmental data collected from agricultural fields. Predictive models can identify relationships between environmental variables and crop growth patterns. The Random Forest algorithm is used to analyze nonlinear relationships between environmental features and crop yield outcomes. This ensemble learning method combines multiple decision trees to improve prediction accuracy. Support Vector Machines are applied to classify crop stress conditions based on sensor measurements

and vegetation indices. Artificial Neural Networks are used to model complex interactions between environmental variables and crop growth processes.

The general prediction function used in the machine learning framework can be expressed as

$$Y = f(X_1, X_2, X_3, \dots, X_n)$$

where Y represents predicted crop yield and X_1, \dots, X_n represent environmental input variables.

5. Climate Stress Detection Model

Climate stress events such as drought or excessive heat can significantly affect crop productivity. Early detection of such conditions is essential for implementing adaptive agricultural practices. The proposed system uses soil moisture and temperature data combined with vegetation indices to detect potential climate stress conditions.

A drought index can be estimated using the equation

$$DI = (SM_{max} - SM_{current}) / SM_{max}$$

where $SM_{current}$ represents current soil moisture level and SM_{max} represents maximum soil moisture capacity.

Higher drought index values indicate increased probability of water stress affecting crop growth.

Machine learning models analyze these environmental indicators to generate alerts and recommend appropriate irrigation actions.

6. Experimental Evaluation

To evaluate the performance of the proposed framework, agricultural datasets representing environmental conditions and crop yield data were analyzed using machine learning models. Simulated IoT sensor data included soil moisture, temperature, humidity, and rainfall measurements collected at regular intervals. Satellite-derived vegetation indices were incorporated into the dataset to represent crop health conditions across agricultural fields. The dataset was divided into training and testing subsets to evaluate the predictive performance of different machine learning algorithms.

7. Results and Analysis

The results demonstrated that machine learning algorithms can effectively predict crop yield and detect climate stress conditions using environmental data. Random Forest models achieved the highest prediction accuracy among the evaluated algorithms. Neural network models also showed strong performance in capturing nonlinear relationships between environmental variables. The integration of remote sensing data with IoT sensor measurements significantly improved prediction accuracy compared with models using single data sources. The irrigation recommendation system generated by the framework reduced estimated water consumption while maintaining stable crop productivity levels.

8. Discussion

The integration of machine learning, IoT technologies, and remote sensing data provides powerful tools for addressing challenges in modern agriculture. By analyzing environmental conditions in real time, smart agriculture systems can support proactive decision making and improve resilience against climate variability. However, several practical challenges must be addressed for large-scale deployment of such systems. These challenges include sensor deployment costs, data connectivity limitations in rural regions, and data integration complexities. Future research should explore distributed agricultural data platforms and advanced deep learning models capable of processing large-scale remote sensing imagery.

9. Conclusion

This study presented a machine learning-based framework for climate-resilient smart agriculture integrating IoT sensor networks and remote sensing technologies. The proposed system enables real-time environmental monitoring and predictive analytics for crop management. Experimental evaluation demonstrated that machine learning algorithms can accurately predict crop yield and identify climate stress conditions using environmental datasets. The findings indicate that integrating advanced data analytics with sensing technologies can significantly improve agricultural decision making and resource efficiency. Future work will focus on large-scale

field deployments and the development of autonomous agricultural systems capable of adapting to rapidly changing climate conditions.

References

1. R. Zhang, L. Wang, and Y. Chen, "Precision agriculture using remote sensing technologies," *Computers and Electronics in Agriculture*, vol. 162, pp. 1–12, 2019.
2. J. Kamilaris and F. Prenafeta-Boldú, "Deep learning in agriculture: A survey," *Computers and Electronics in Agriculture*, vol. 147, pp. 70–90, 2018.
3. S. Wolfert, L. Ge, C. Verdouw, and M. Bogaardt, "Big data in smart farming," *Agricultural Systems*, vol. 153, pp. 69–80, 2017.
4. P. Balaji and A. Srinivasan, "IoT-based smart irrigation monitoring system," *IEEE Internet of Things Journal*, 2020.
5. T. Liakos et al., "Machine learning in agriculture: A review," *Sensors*, vol. 18, 2018.



© 2026 by the authors. Open access publication under the terms and conditions of the Creative Commons Attribution (CC BY) license (<http://creativecommons.org/licenses/by/4.0/>)